

Scirtid Beetles (Coleoptera, Scirtidae) of the Oriental Region
Part 10. New Species and New Record of *Cyphon variabilis* Species-Group

Hiroyuki YOSHITOMI

Bioindicator Co., Ltd. (Sapporo Branch), Kita 1, Nishi 2–11,
Chûô-ku, Sapporo, 060–0001 Japan*

Abstract Four new species of *Cyphon variabilis* species-group, *C. putzi* sp. nov., *C. kotanus* sp. nov., *C. apoanus* sp. nov., and *C. sagadanus* sp. nov., are described from China, Malaysia and the Philippines respectively. Additional specimens of *Cyphon thailandicus* RUTA, 2004 and *Cyphon weigeli* KLAUSNITZER, 2005 are recorded.

Introduction

Cyphon variabilis species-group (sensu NYHOLM, 1972 and YOSHITOMI, 2005) is characterised by the following characteristics: tergites VIII–IX rod-like with hemitergites, sternite VIII membranous, sternite IX covered with long setae in apical part, tegmen variously shaped, penis tending to reduction and smaller than tegmen.

In the Oriental Region, five species of this group have been recorded from the Philippines, Nepal, and Thailand so far (KLAUSNITZER, 2005 a, b, c; RUTA, 2004). In the present paper, I describe four new species from China, Malaysia, and the Philippines respectively.

For methodology and abbreviations see YOSHITOMI (2005). Type depositories are as follows: Naturhistorisches Museum Wien, Austria (NMW); Entomological Laboratory, Ehime University, Matsuyama, Japan (EUM); Collection of Dr. Andreas PÜTZ, Eisenhüttenstadt, Germany (CPE).

Taxonomy

Cyphon putzi sp. nov.

(Figs. 1A, 2)

Type material. Holotype (CPE): male, “CHINA: Yunnan [CH07–14], Baoshan Pref., Gaoligong Shan, 33 km SE Tengchong, 2100–2200 m, 24° 51' 22" N, 98° 45' 36" E, decid forest, litter, wood fungi sifted, 31.V.2007, leg. A. Pütz”.

* Present address: Entomological Laboratory, Faculty of Agriculture, Ehime University, Tarumi 3–5–7, Matsuyama, 790–8566 Japan. E-mail: hymushi@agr.ehime-u.ac.jp

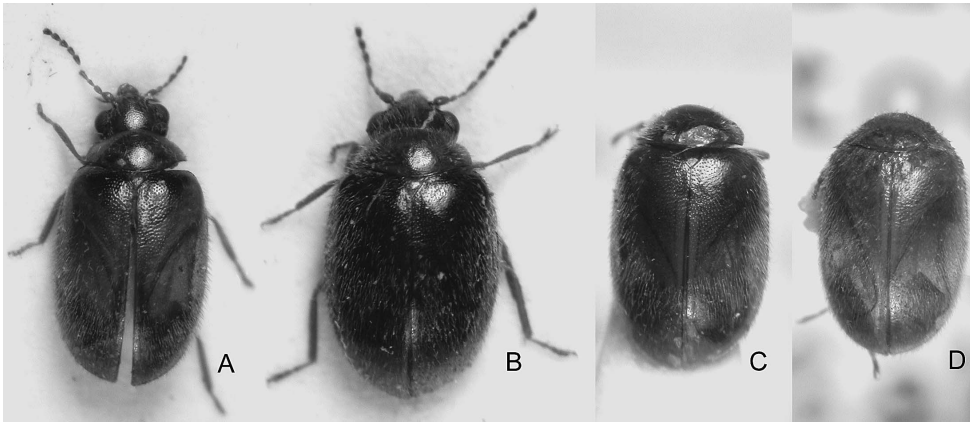


Fig. 1. Holotypes of *Cyphon* spp. — A, *Cyphon putzi* sp. nov.; B, *Cyphon kotanus* sp. nov.; C, *Cyphon apoanus* sp. nov.; D, *Cyphon sagadanus* sp. nov.

Description. Body oval, dorsally convex, shining, densely covered with yellowish-white setae. Coloration of body yellowish-brown; apical parts of antennae and basal part of elytra infuscate.

Head moderate in size, dorsally finely granulate; anterior margin of clypeus almost straight; distance between eyes about 2.0 times as long as the maximal eye's diameter. Antennae slim, moderate in length. Pronotum transverse, strongly depressed dorso-laterally, finely punctate; anterior margin almost straight; antero-lateral angles obtuse, slightly projecting; lateral margins weakly arcuate; postero-lateral angles almost 120° ; posterior margin gently bisinuate; PW/PL 2.37. Scutellum subtriangular, finely punctate. Elytra oval, convex dorsally, widest in middle, strongly punctate, without costae; elytral humeri slightly elevated; EL/EW 1.39; EL/PL 4.92; EW/PW 1.50; TL/EW 1.67. Legs relatively long.

Caudal margin of sternite VII arcuate. Tergite VIII long, well sclerotized, rod-like hemitergites, apically expanded laterally, with membranous projections on inner margin of apical parts. Tergite IX long, well sclerotized, rod-like hemitergites, slightly longer than tergite VIII, densely covered with shallow and large oblong concavities on apical half, pointed at apices. Sternite IX moderately sclerotized, fan-shaped, apically with short setae, intermingled with fine punctures. Tegmen large, slightly sclerotized, trapezoidal in posterior part (=parameres), widest at posterior margin, densely covered with short setae. Penis as long as tegmen, well sclerotized; pala oblong, arcuate on basal margin; parameroids projecting antero-laterally, pointed at apices; trigonium shallowly excised in median part.

Measurements (n = 1). TL 2.25 mm; PW 0.90 mm; PL 0.38 mm; EL 1.87 mm; EW 1.35 mm.

Distribution. China (Yunnan Prov.).

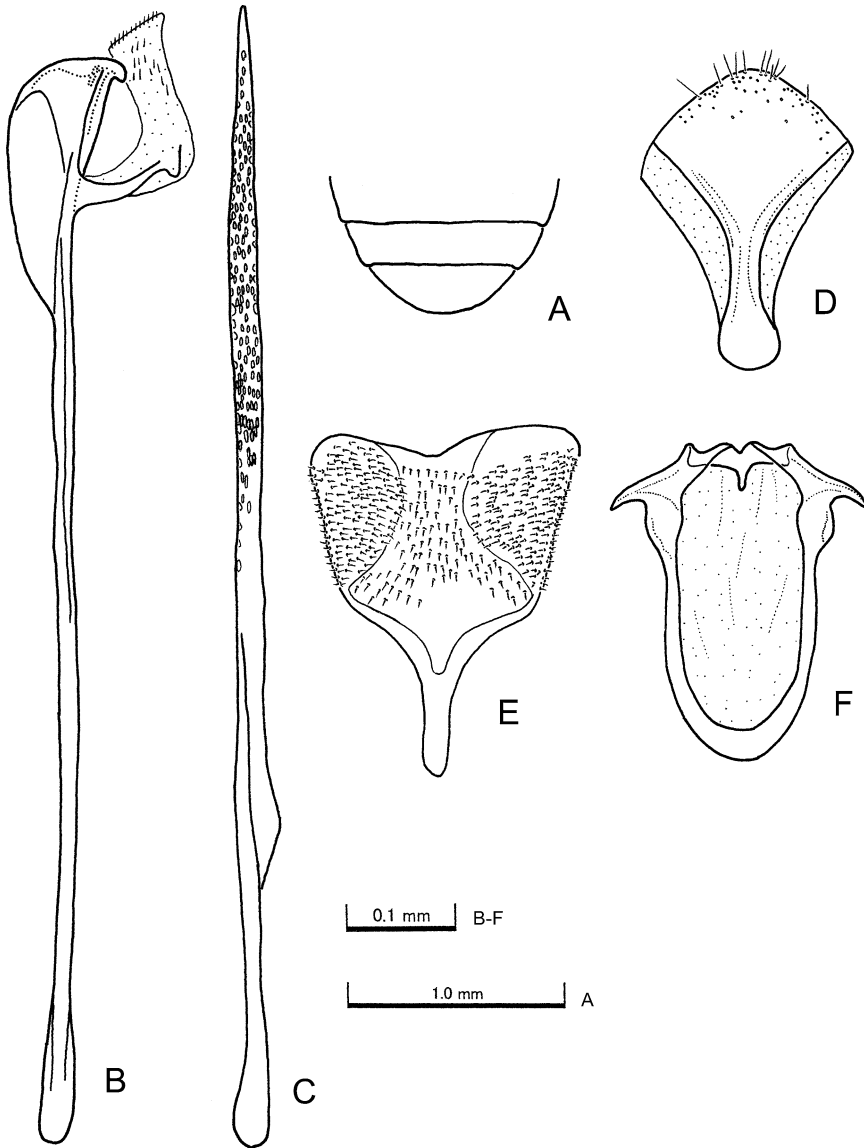


Fig. 2. *Cyphon putzi* sp. nov., holotype. — A, Sternites V–VII; B, right piece of tergite VIII; C, right piece of tergite IX; D, sternite IX; E, tegmen; F, penis.

Remarks. This species is similar to *Cyphon jaegeri* KLAUSNITZER, 2005 known from Nepal by the shapes of tergites VIII–IX and penis, but differs from it by the following characteristics: 1) sternite IX fan-shaped, bearing setae (*C. jaegeri* is project-

ing postero-mesally, and lacking setae); 2) tergite IX with concavities (without concavities in *jaegeri*); 3) parameroids of penis distinctly projecting laterally (slightly projecting in *jaegeri*).

Etymology. This species is named after Dr. Andreas PÜTZ, collector of the holotype.

Cyphon kotanus sp. nov.

(Figs. 1B, 3)

Type material. Holotype (NMW): male, "MALAYSIA, Sabah 1993 50 km E Kota Kinabalu Crocker Mts., Gg. Emas 16.-27.4. Strba & Jenis", genit. s. no. HY 964.

Description. Body oval, dorsally strongly convex, shining, densely covered with yellowish-white setae. Head, mouth parts, antennal segments I–V, pronotum, scutellum, legs and ventral surfaces of thoracies and abdomen reddish-brown; antennal segments VI–XI and elytra black; elytral humeri and apical fourth of elytra reddish-brown.

Head moderate in size, dorsally finely granulate; anterior margin gently arcuate; the distance between eyes about 2.1 times as long as the maximal eye's diameter. Antennae slender, reaching about proximal 1/4 of elytra. Pronotum transverse, strongly depressed dorso-laterally, finely punctate; anterior margin almost straight; antero-lateral angles almost right-angled, slightly projecting; lateral margins straight; postero-lateral angles obtuse; posterior margin arcuate; PW/PL 2.40. Scutellum subtriangular, finely punctate. Elytra oval, dorso-mesally convex, widest in middle, finely punctate, without costae; elytral humeri slightly elevated; EL/EW 1.32; EL/PL 4.40; EW/PW 1.39; TL/EW 1.62. Legs relatively long.

Caudal margin of sternite VII straight. Tergite VII pentagonal, with short apodemes. Tergites VIII–IX long, well sclerotized, rod-like hemitergites, pointed at apices. Sternite IX small, slightly sclerotized; anterior part lobed; posterior part expanded laterally, with a pair of small projections bearing short setae. Tegmen slightly sclerotized, circular in posterior part (parameres), widest at apical fourth, densely covered with short setae. Penis longer than tegmen, moderately sclerotized; pala oblong, arcuate on basal margin; parameroids projecting postero-laterally in basal parts, thence abruptly curved postero-laterally, obtuse at apices; trigonium gently projecting, shallowly concaved in median part.

Measurements (n = 1). TL 2.43 mm; PW 1.08 mm; PL 0.45 mm; EL 1.98 mm; EW 1.50 mm.

Distribution. Malaysia (Sabah).

Remarks. Within the *Cyphon variavilis* species-group, this species differs in having: 1) posterior part of sternite IX expanded laterally, with a pair of small projections bearing short setae; 2) parameroids projecting postero-laterally in basal parts, thence abruptly curved postero-laterally. The character state of trigonium shallowly concaved in median part is similar to that of *Cyphon putzi* sp. nov.

Etymology. The species is named after the type locality.

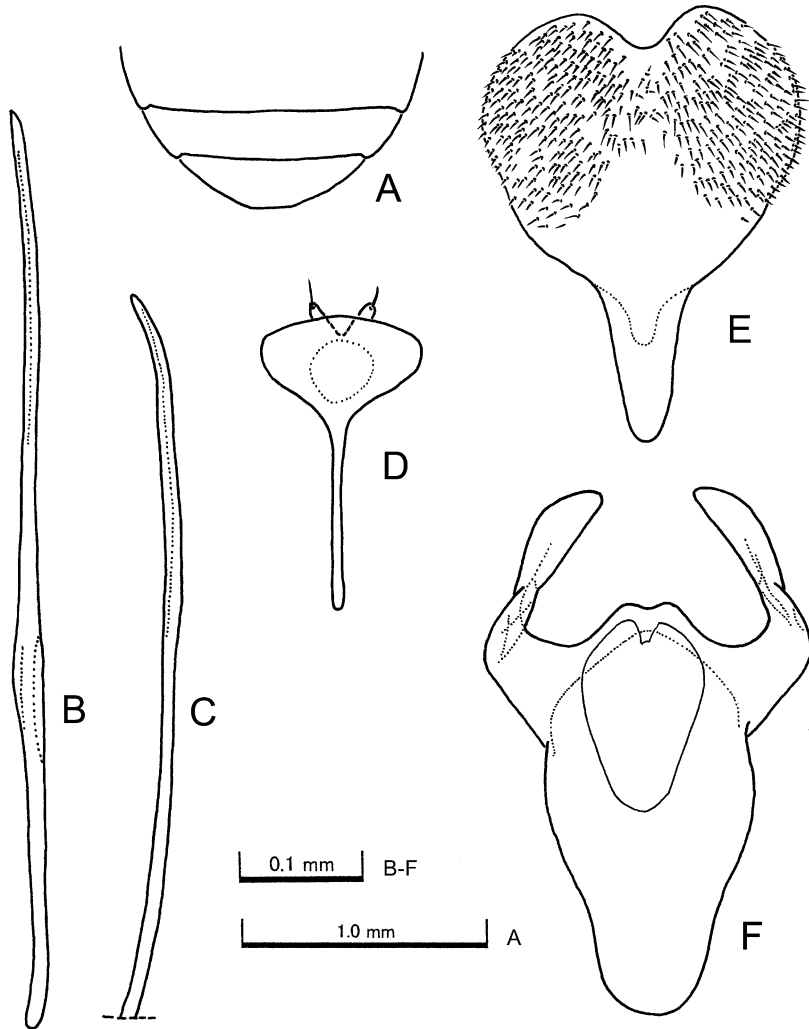


Fig. 3. *Cyphon kotanus* sp. nov., holotype. — A, Sternites V–VII; B, right piece of tergite VIII; C, right piece of tergite IX; D, sternite IX; E, tegmen; F, penis.

Cyphon apoanus sp. nov.

(Figs. 1C, 4)

Type material. Holotype (EUM): male, “[MINDANAO] Eagle Centre, 1100 m Baracatan north slope of Mt. Apo 4.VIII.1985 M. Sakai”, genit. s. no. HY 960.

Description. Body oval, dorsally convex, shining, densely covered with yellowish-white setae. Coloration of body reddish-brown; legs paler.

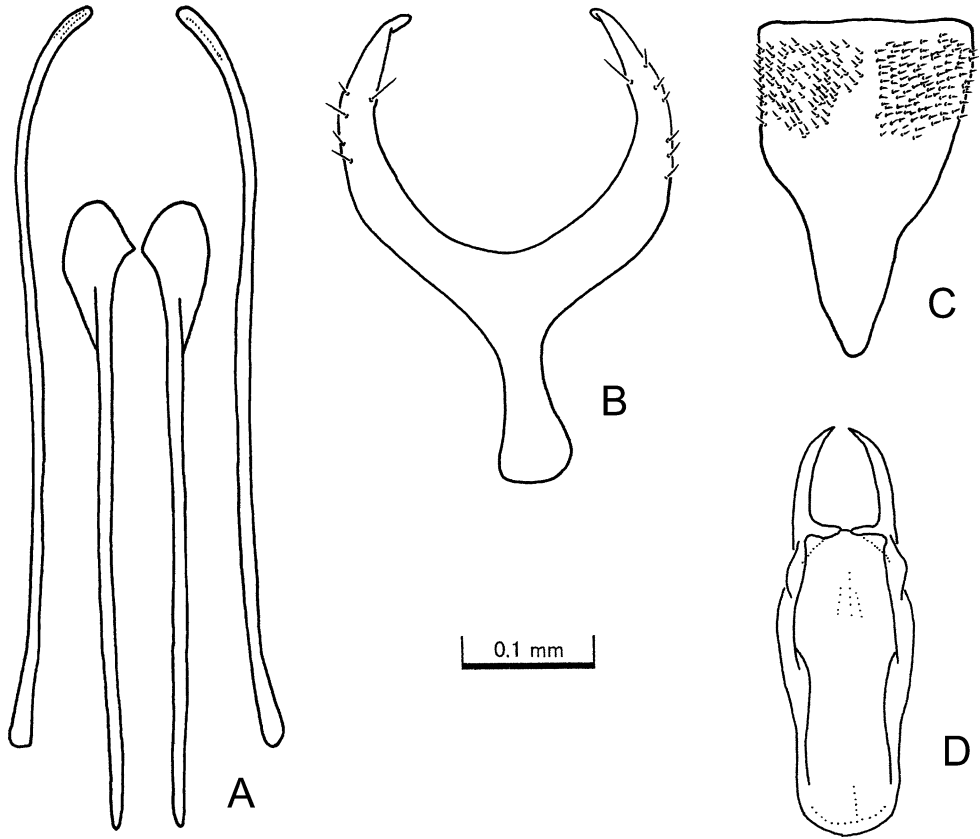


Fig. 4. *Cyphon apoanus* sp. nov., holotype. — A, Tergites VIII-IX; B, sternites IX; C, tegmen; D, penis.

Head moderate in size, finely punctate; anterior margin of clypeus almost straight; the distance between eyes about 2.1 times as long as the maximal eye's diameter. Pronotum transverse, depressed dorso-laterally, finely punctate; anterior margin almost straight; antero-lateral angles strongly projecting, about 60° ; lateral margins almost straight; postero-lateral angles obtuse; posterior margin gently arcuate; PW/PL 2.21. Scutellum subtriangular, finely punctate. Elytra oval, dorso-mesally convex, widest in middle, punctate as in pronotum, without costae; elytral humeri slightly elevated; EL/EW 1.06; EL/PL 3.33; EW/PW 1.42; TL/EW 1.38.

Caudal margin of sternite VII arcuate. Tergite VIII moderately sclerotized, rod-like hemitergites, obtuse at apices. Tergite IX moderately sclerotized, rod-like hemitergites, shorter than tergite VIII, expanded apically. Sternite IX well sclerotized, Y-shaped; basal part short, slightly expanded laterally and basally; apical part gently

curved inwardly, bearing short setae in apical half. Tegmen small, slightly sclerotized, subtriangular, posteriorly densely covered with short setae. Penis small, slightly sclerotized, longer than tegmen; pala oblong, subparallel, gently arcuate on basal margin; parameroids slightly convex; trigonium long, claw-like, apically curved inwardly, pointed at apices.

Measurement (n=1). TL 1.86 mm; PW 0.95 mm; PL 0.43 mm; EL 1.43 mm; EW 1.35 mm.

Distribution. Philippines (Mindanao Isl.).

Remarks. By Y-shaped sternite IX and long claw-like trigonium, this species resembles representatives of the “*ochraeus* subgroup” of *Cyphon coarctatus* species-group (sensu KLAUSNITZER, 2005 d), but its hemitergites VIII–IX are characteristic for the *variabilis* species-group.

Etymology. The species is named after the type locality.

Cyphon sagadanus sp. nov.

(Figs. 1D, 5)

Type material. Holotype (EUM): male, “Luzon: PHILIPPINES Sagada (1550 m) nr. Bontoc Mount. Prov. 23.VII.1985 M. Sakai leg.”, genit. s. no. HY 967.

Description. Body oval, dorsally convex, shining, densely covered with yellowish-white setae. Coloration of body pale brown.

Head moderate in size, finely punctate, dorsally slightly convex; anterior margin of clypeus slightly arcuate; the distance between eyes about 2.1 times as long as the maximal eye’s diameter. Pronotum transverse, depressed dorso-laterally, finely punctate; anterior margin almost straight; antero-lateral angles perpendicular, projecting; lateral margins gently arcuate; postero-lateral angles obtuse; posterior margin gently arcuate; PW/PL 2.38. Scutellum subtriangular, finely punctate. Elytra oval, dorso-mesally convex, subparallel from elytral base to apical third, punctate as in pronotum, without costae; elytral humeri elevated; EL/EW 1.41; EL/PL 4.58; EW/PW 1.37; TL/EW 1.72. Legs relatively long and slim.

Caudal margin of sternite VII arcuate. Tergite VIII slightly sclerotized, rod-like hemitergites, pointed at apices. Tergite IX slightly sclerotized, as long as tergite VIII, rod-like hemitergites, expanded laterally in apical parts. Sternite IX moderately sclerotized; basal half club-like, expanded basally; apical half oblong-oval, deeply excised in median part of apical margin, with a pair of claw-like projections on apical margin, bearing short setae apically. Tegmen small, slightly sclerotized, trapezoidal in posterior part (parameres), widest at apical half, densely covered with short setae. Penis small, slightly sclerotized, longer than tegmen; pala oblong, evenly tapered basally; parameroids indistinct; trigonium long, claw-like, curved interiorly, pointed at apices.

Measurements (n=1). TL 2.23 mm; PW 0.95 mm; PL 0.40 mm; EL 1.83 mm; EW 1.30 mm.

Distribution. Philippines (Luzon Isl.).

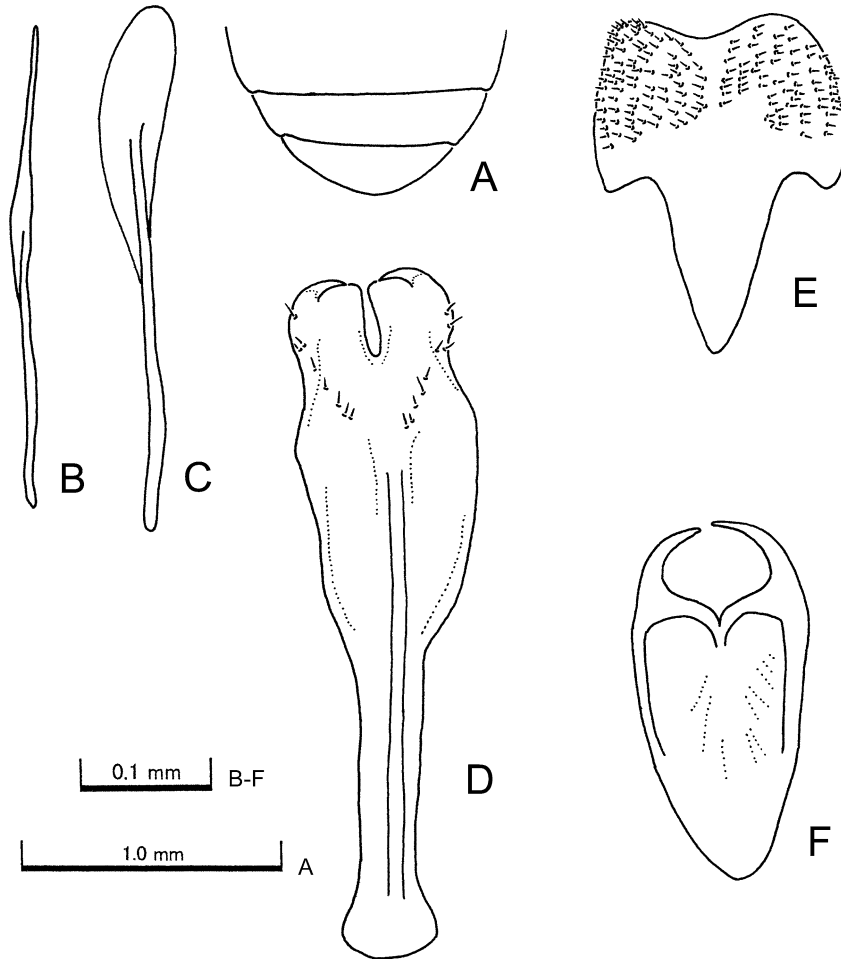


Fig. 5. *Cyphon sagadanus* sp. nov., holotype. — A, Sternites V–VII; B, tergite VIII; C, tergite IX; D, sternite IX; E, tegmen; F, penis.

Remarks. Within the *Cyphon variavilis* species-group, this species differs in having: 1) sternite IX long, deeply excised in median part of apical margin, with a pair of claw-like projections on apical margin; 2) parameroids of penis indistinct; 3) trigonium long, claw-like, curved interiorly, pointed at apices. The character state of trigonium claw-like projections is similar to that of *Cyphon apoanus* sp. nov.

Etymology. The species is named after the type locality.

***Cyphon thailandicus* RUTA, 2004**

Cyphon thailandicus RUTA, 2004, 372.

Additional material. 1 male (EUM), “[North THAI] Maeo Khun Klang 1350 m, Doi Inthanon 17.X.1983 M. Sakai”, genit. s. no. HY 958.

Distribution. Thailand.

***Cyphon weigeli* KLAUSNITZER, 2005**

Cyphon weigeli KLAUSNITZER, 2005 b, 300.

Additional material. 1 male (EUM), “[Central NEPAL] Ulleri (2000m) nr. Ghorapani 14.X.1981 M. Sakai”, genit. s. no. HY 747; 2 males (EUM), “[Central NEPAL] Kuldi (3000m)–Chumrung (2000m) nr. Ghandrung 21.X.1981 M. Sakai”.

Distribution. Nepal.

Discussion

Based on the male genital characteristics, the *variabilis* species-group is divided into six subgroups (KLAUSNITZER, 2005 b), and five species of *jaegeri* subgroup are known hitherto from the Oriental Region. Two new species, *Cyphon putzi* sp. nov. and *C. kotanus* sp. nov., are clearly the *jaegeri* subgroup (sensu KLAUSNITZER, 2005 a, b), but the remaining two new species, *C. apoanus* sp. nov. and *C. sagadanus* sp. nov., are uncertain in subgroup. In this paper, I propose a new subgroup (*apoanus* subgroup) for *C. apoanus* sp. nov. and *C. sagadanus* sp. nov. The *apoanus* subgroup is characterized in having claw-like long trigonium which is similar character state in *coarctatus* species-group.

Key to Subgroup of the *Cyphon variabilis* Species-group

(modified KLAUSNITZER, 2005 b)

1. Trigonium distinct, with a pair of projections (=“apical teeth” in YOSHITOMI, 2005); parameroids indistinct2
- Trigonium indistinct; parameroids distinct, projecting apico-laterally; distributed in the Oriental Region *jaegeri* subgroup
2. Pala oval; trigonium short, with a pair of thumb-like/claw-like projections3
- Pala oblong; trigonium long, claw-like projections; distributed in the Oriental Region *apoanus* subgroup
3. Basal part of tegmen short, distinctly and abruptly tapered4
- Basal part of tegmen long, gently and evenly tapered6
4. Sternite IX oblong; parameres widely plate-like, apical teeth large5
- Sternite IX trapezoidal; parameres composed a pair of projections; apical teeth

- small and thin; distributed in the Palaearctic Region..... *ussuricus* subgroup
5. Tegmen not expanded near basal margin; parameres closely covered with short setae and punctures; distributed in Palaearctic and Nearctic Regions *padi* subgroup
- Tegmen expanded near basal margin; parameres closely covered with long setae; distributed in the Palaearctic Region *hilaris* subgroup
6. Tegmen trilobate in posterior part; parameres connected; distributed in Palaearctic and Nearctic Regions *variabilis* subgroup
- Tegmen U-shaped; parameres separated; distributed in Palaearctic and Nearctic Regions *pubescens* subgroup

List of the Oriental Species of *Cyphon variabilis* Species-group

<i>Cyphon apoanus</i> sp. nov.	Philippines (Mindanao Isl.)
<i>Cyphon brancucci</i> KLAUSNITZER, 2005	Philippines (Mindanao Isl.)
<i>Cyphon jaegeri</i> KLAUSNITZER, 2005	Nepal
<i>Cyphon kotanus</i> sp. nov.	Malaysia (Sabah)
<i>Cyphon putzi</i> sp. nov.	China (Yunnan Prov.)
<i>Cyphon sagadanus</i> sp. nov.	Philippines (Luzon Isl.)
<i>Cyphon schmidti</i> KLAUSNITZER, 2006	Nepal
<i>Cyphon thailandicus</i> RUTA, 2004	Thailand
<i>Cyphon weigeli</i> KLAUSNITZER, 2005	Nepal

Acknowledgements

I wish to express my sincere gratitude to Dr. M. JÄCH (NMW), Dr. Andreas PÜTZ, and Dr. Masahiro SAKAI (EUM) for their permission to loan the museum collections. I also thank the late Dr. Masataka SATÔ, Dr. Bernhard KLAUSNITZER, and Mr. Rafal RUTA for their kindness in various help.

要 約

吉富博之: 東洋区のマルハナノミ科 パート 10. *Cyphon variabilis* 種群の新種と新記録種. — *Cyphon variabilis* 種群に属する 4 新種, *C. putzi* sp. nov. (中国), *C. kotanus* sp. nov. (マレーシア), *C. apoanus* sp. nov. (フィリピン), および *C. sagadanus* sp. nov. (フィリピン) を記載した. また, *C. thailandicus* RUTA, 2004 および *C. weigeli* KLAUSNITZER, 2005 の追加標本を記録した.

References

- KLAUSNITZER, B., 2005 a. Eine neue *Cyphon*-Art aus Nepal mit allgemeinen Anmerkungen zur Gattung *Cyphon* PAYKULL, 1799 (Coleoptera, Scirtidae). *Ent. Blät.*, **101**: 69–78.
- 2005 b. Eine neue Art der *Cyphon variabilis*-Gruppe aus Nepal (Coleoptera, Scirtidae). *Beitr. Ent.*,

- 55: 299–304.
- 2005 c. Zur Kenntnis der Scirtidae der Philippinen (Coleoptera). 1. Teil: Gattung *Cyphon* PAYKULL, 1799. *Ent. Basil. Col. Frey*, **27**: 15–25.
- 2005 d. Zwei neue Arten der Gattung *Cyphon* PAYKULL, 1799 aus Myanmar (Birma) (Col., Scirtidae) und Anmerkungen zur *Cyphon coarctatus*-Gruppe. *Ent. Nachr. Ber.*, **49**: 103–109.
- NYHOLM, T., 1972. Die nordeuropäischen Arten der gattung *Cyphon* PAYKULL. Taxonomie, Biologie, Ökologie und Verbreitung. *Ent. Scand. (Suppl.)*, **3**: 1–100.
- RUTA, R., 2004. Five new species of Oriental Scirtidae (Coleoptera: Scirtoidea). *Genus*, **15**: 363–379.
- YOSHITOMI, H., 2005. Systematic revision of the family Scirtidae of Japan, with phylogeny, morphology and bionomics (Insecta: Coleoptera, Scirtoidea). *Jpn. J. syst. Ent., Monographic series*, (3), 212 pp., Matsuyama.

Elytra, Tokyo, **37**(1): 97–98, May 29, 2009

A New Distributional Record of *Platychora licheneopicta* (Coleoptera, Nitidulidae) from Lanyu Island, off Taiwan

Sadatomo HISAMATSU

Entomological Laboratory, The United Graduate School of Agricultural Sciences,
Ehime University, 5–7, Tarumi 3-chôme, Matsuyama, 790–8566 Japan
E-mail: insect@agr.ehime-u.ac.jp

Platychora licheneopicta JELÍNEK, 1980 was described from Leyte and Luzon Islands of the Philippines, and there is no record from other areas. I found it in the coleopteran collections of Ehime University, and am going to report it from Lanyu Island, off Taiwan as the first representative of the genus.

The fauna of Lanyu Island is quite different from that of the main island of Taiwan. As was pointed out by KANO (1929 a, b, etc.), the fauna of the island is especially similar to that of the Philippines. This report gives an example of the specific fauna of the island.

Platychora licheneopicta JELÍNEK, 1980
(Fig. 1)

Platychora licheneopicta JELÍNEK, 1980, 96 (type locality: Ins. Leyte, Philippines); 1982, 178.

Diagnosis. Body with black and whitish yellow scales composing rather complicated pattern. Tips of mandibles simple. Length 3.6–4.8 mm.

Specimen examined. [TAITUNG] 1 ♀, Is. Lanyu, 21–VI–1972, S. TAKEDA leg.

Distribution. Philippines (Luzon and Leyte), and Taiwan (Is. Lanyu) (new record).



Fig. 1. Habitus of *Platychora licheneopicta*, dorsal view (Lanyu Is., Taiwan).

I wish to express my sincere gratitude to Dr. HIROYUKI YOSHITOMI (Ehime University) for his valuable advice and critical reading of the manuscript.

References

- JELÍNEK, J., 1980. Zur Taxonomie der asiatischen Nitidulidae und Cerylonidae (Coleoptera). *Reichenbachia, Dresden*, **18**(14): 93–102.
- 1982. New and little known taxa of Nitidulidae (Coleoptera). *Acta ent. Mus. natn. Pragae*, (B), **38**: 171–200.
- KANO, T., 1929 a. A list of Cicindelidae and Cerambycidae from the Island of Botel-Tobago (Kôtôsho), with a consideration of its insect-fauna. *Kontyû, Tokyo*, **3**: 76–82. (In Japanese, with English title.)
- 1929 b. The distribution of the curculionid beetles of the genus *Pachyrrhynchus* GERMAR, with a consideration on the insect-fauna of the Island of Botel-Tobago and its adjacent islands. *Kontyû, Tokyo*, **3**: 232–238. (In Japanese, with English title and descriptions.)